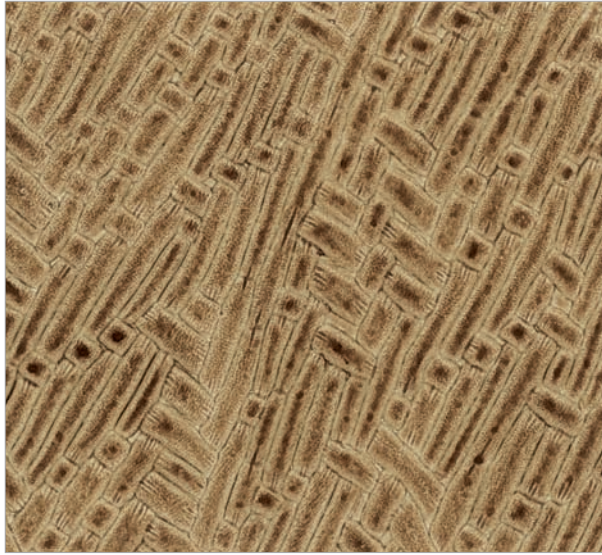
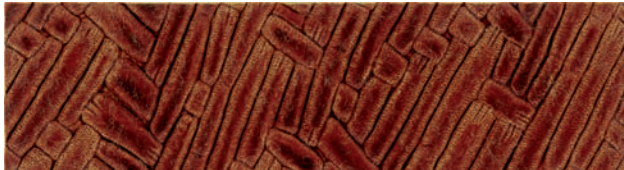


# RENAISSANCE IV



CARAMEL

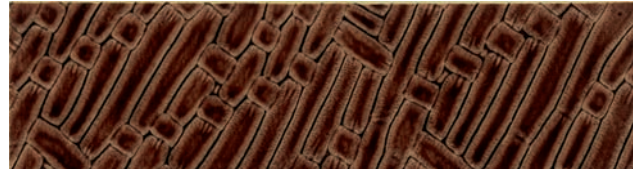


TEA

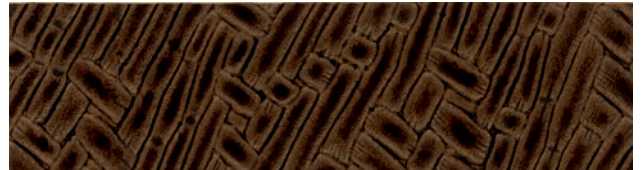
## Bamboo™



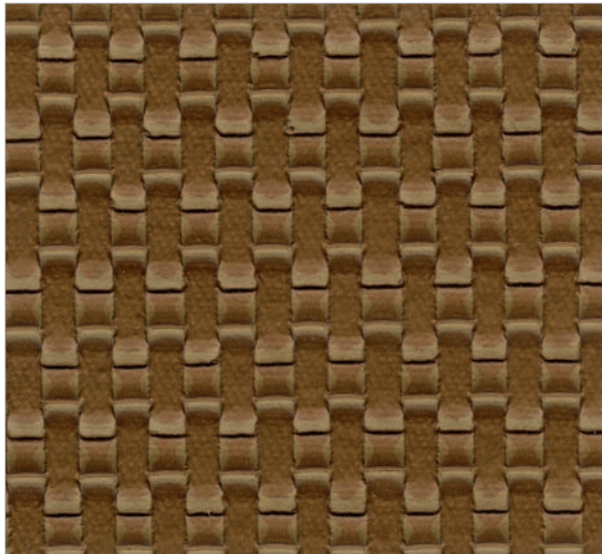
NATURAL



MOCHA



BARK



RUST



WALNUT

## Crochet™



ALMOND



PECAN



BLACK

Printed colors shown are extremely accurate to the actual colors however please request a memo sample to ensure satisfaction.

# RENAISSANCE IV

## Bamboo & Crochet™

Innovative Products for Creative People

### Specifications

---

Width: 54"

---

Content: Face poly vinyl with proprietary top coating  
Back 65% polyester, 35% cotton

---

Put-up: 40 Yard Roll

---

Thickness: 44/48 gauge

---

### Characteristics

---

- Superior Wear Resistance  
Bamboo: Exceeds 100,000 double rubs  
Crochet Exceeds 39,000 double rubs  
\*ASTM D3597 Wyzenbeek
  - Ultrasoft Leather Feel
  - Innovative Patterns
  - Mildew Resistant
  - Cold Crack Resistant
- 

### Flammability Requirements\*

---

- Motor Vehicle Safety Standard - 302
  - California Tech Bulletin 117 - Class 1
  - UFAC - Class 1 Rating
- 

### Care & Cleaning

---

General Care: While this product is inherently stain resistant, it is important to keep it clean at all times to maintain the original look and rich feel.

---

Stain Removal: Spot clean with mild soap and water. Rinse the cleaned area with clean water and dry with air or lint-free cloth. **DO NOT USE ALCOHOL BASED CLEANERS.**

---

\*This term and any other corresponding data refer to typical performance in the tests indicated and should not be construed to imply the behavior of this or any other material under actual fire conditions.



FLOCK TEX, Inc.

200 Founders Dr.  
Woonsocket, RI 02895

Tel: 401.765.2340

Fax: 401.765.4915

Toll Free: 800.556.7286

[www.flocktex.com](http://www.flocktex.com)